

Enhance! Your HIV 1/2 Screening Capabilities

ABOUT HIV

Acquired immunodeficiency syndrome (AIDS) is caused by either HIV-1 or HIV-2 or by both. They are mainly transmitted by unprotected sexual contact, exposure to infected blood through a syringe, needle, and blood transfusion or from mother to fetus and through breast feeding. Belonging to the retrovirus class, both HIV1 and HIV 2 share many similarities including their basic gene arrangement, modes of transmission, intracellular replication pathways and clinical consequences: both result in AIDS. However, HIV-2 is characterized by lower transmissibility and reduced likelihood of progression to AIDS. In terms of epidemiology, HIV-2 remains largely confined to West Africa, whereas HIV-1 extends worldwide.



Accurate detection

- Microwells coated with highly purified recombinant proteins and monoclonal antibodies.
- Higher Sensitivity and Specificity.
- Evaluated and approved by NIB.



Fast & Streamline

- Results in less than 110 minutes.
- Compatible to almost all open ELISA processors.
- Significant reduction in window period up to 2 weeks



Efficient

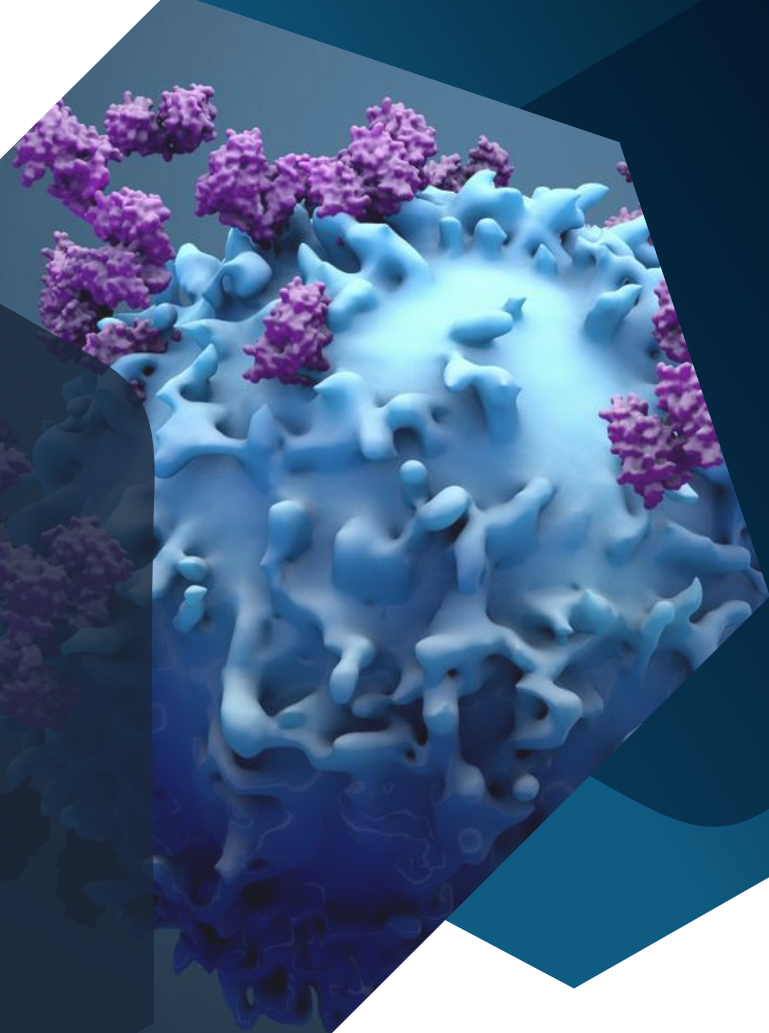
- 75 µl Serum/plasma samples.
- Sample addition verification by changing color.
- <10 pg/mL analytical sensitivity of p24 Antigen

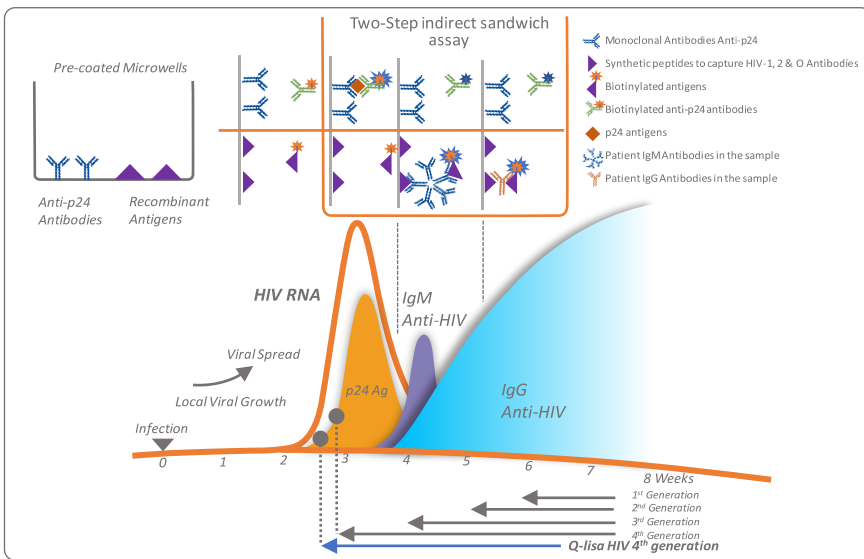


HIV (4th GENERATION)

An Indirect sandwich type of ELISA for the detection of Antigen P24 to HIV-1, antibodies to HIV-1 (Including subgroup O) and HIV-2 in human serum/plasma.

PRODUCT FEATURES





Other Related Products

ELISA

- Q-lisa HIV-1/2 Antibodies ELISA (3rd Generation)
- Q-lisa HBsAg ELISA
- Q-lisa HCV ELISA

Rapid Immunochromatography Test

- Q-line Rapid HIV-1/2 Antibodies (3rd Generation)
- Q-line Rapid HBsAg
- Q-line Rapid HCV Antibodies
- Q-line Rapid Syphilis Antibodies
- Q-line Rapid Malaria Pf-Pv.
- Q-line Rapid Malaria Pf-PAN
- Q-line Rapid Dengue NS1
- Q-line Rapid Dengue Ab
- Q-line Rapid Dengue Combo

SN	Product Details	Product Specifications	Product Code
1	Q-lisa HIV-1 & 2 4th Generation	E NA 75 110 100 99 12	HIVEF096QB

Procedural Outlines

- 1 Add 50µl Sample Diluent+75µl Specimen (Sample/Controls)
- 2 Incubate for 60 minutes at 37 °C after covering.
- 3 Wash 5 times by using 300µl working Wash Buffer (1X).
- 4 Add 100µl Working conjugate (1X) .
- 5 Incubate for 30 minutes at 37 °C by covering.
- 6 Add 100 µl Substrate and cover the microplate.
- 7 Incubate for 20 minutes in dark.
- 8 Add 100µl Stop Solution.
- 9 Read the microplate within 15 minutes

Get In Touch



1800 123 0079 (Toll Free)
+91-11-42133407



Q-LINE BIOTECH PVT. LTD.
(Formerly known as POCT Services Pvt. Ltd.)
C-108, Naraina Industrial Area, Phase-1,
New Delhi-110028



sales@qlinebiotech.com
customercare@qlinebiotech.com



www.qlinebiotech.com

- Assay Type: E-ELISA ●
- Sample Type: Whole Blood with volume ●
- Sample Type: Serum/Plasma with volume ●
- Assay Time in minutes ●
- Sensitivity (%) ●
- Specificity (%) ●
- Shelf Life (Months) ●

